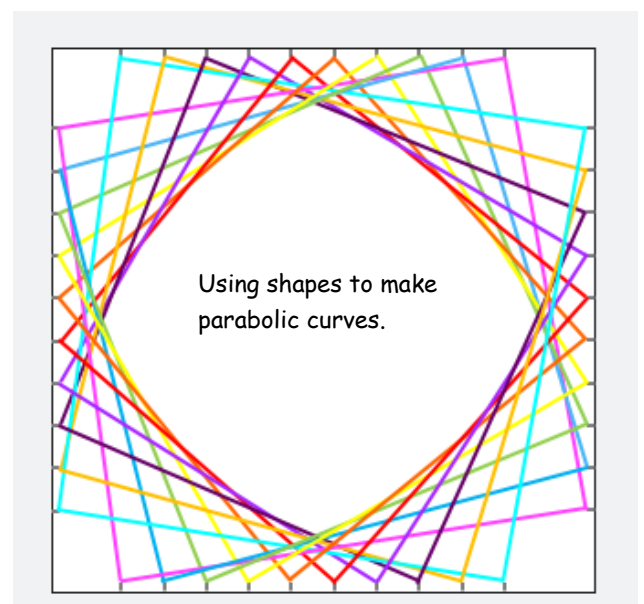
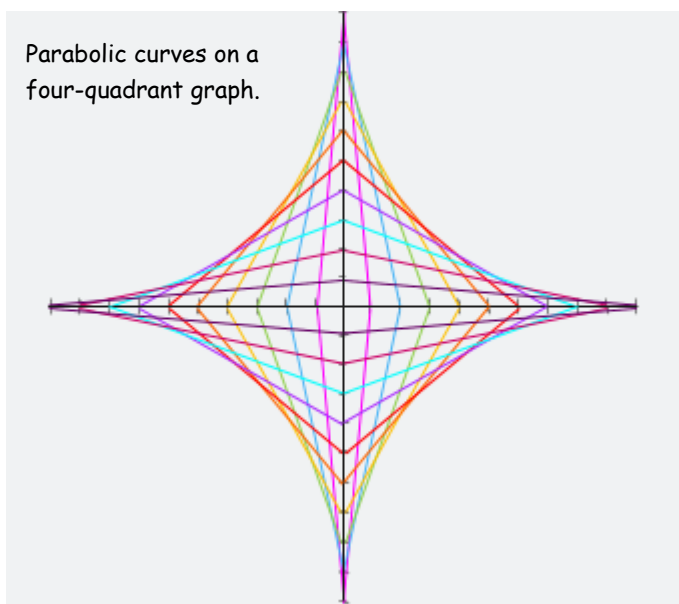
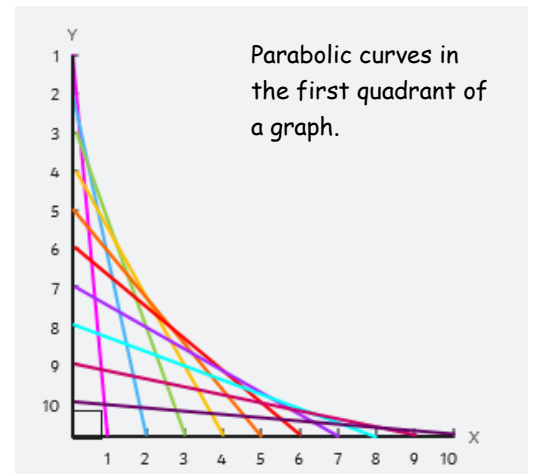
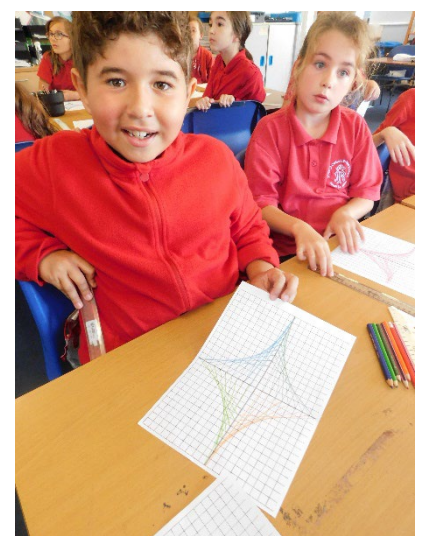
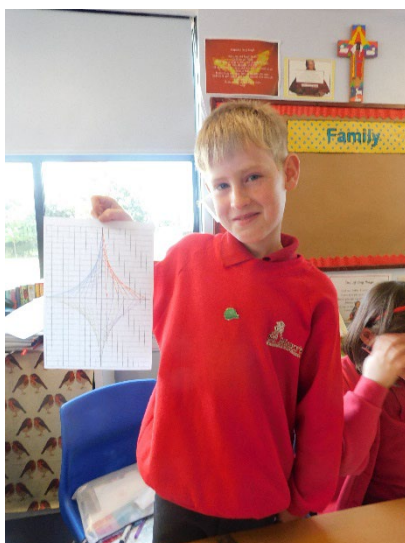


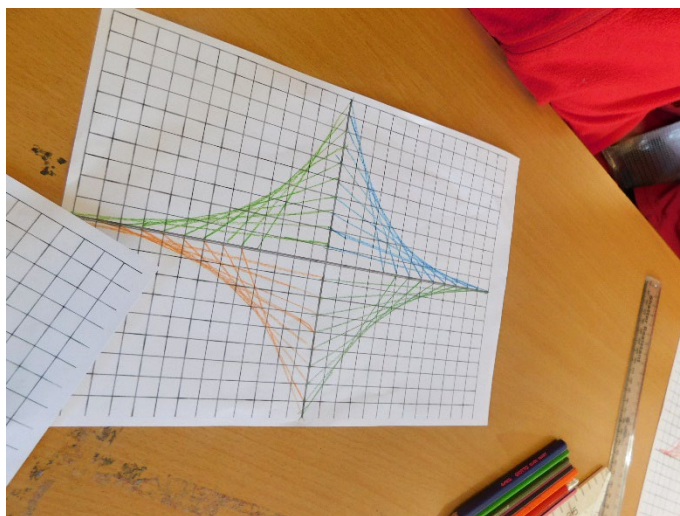
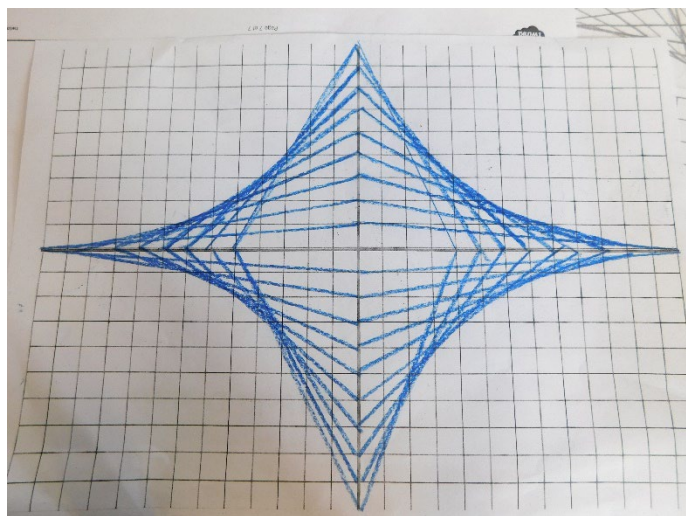
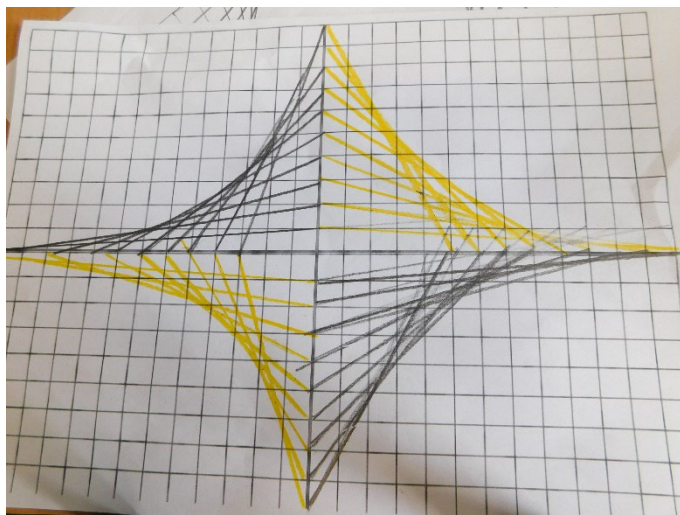
Carpenter Class Mathematics Enrichment Morning Autumn Term 2022

For this term's mathematics enrichment morning, all of the children in the school were using mathematical concepts to make pieces of artwork. In Carpenter Class, the children were making pictures through the use of parabolic curves. Parabolic curve designs are very versatile and involve the creation of curved shapes from the intersection of straight lines. The children used colour, shape, lines, measurements and graphs all in one colourful and creative activity.



Some of the children's graph designs:





Some of the children's designs using parabolic curves in shapes:

