



Introducing the 24-Hour Clock



Analogue and Digital Times



When you see a time written in digital form,
write the time in numbers and words.

When you see a time written in numbers and words,
write the digital form.

7:30

half past 7

Analogue and Digital Times



When you see a time written in digital form,
write the time in numbers and words.

When you see a time written in numbers and words,
write the digital form.

20 past 11



Analogue and Digital Times



When you see a time written in digital form, write the time in numbers and words.

When you see a time written in numbers and words, write the digital form.

20 past 11

11:20

Analogue and Digital Times



When you see a time written in digital form, write the time in numbers and words.

When you see a time written in numbers and words, write the digital form.

10:35

Analogue and Digital Times



When you see a time written in digital form, write the time in numbers and words.

When you see a time written in numbers and words, write the digital form.

10:35

25 to 11

Analogue and Digital Times



When you see a time written in digital form, write the time in numbers and words.

When you see a time written in numbers and words, write the digital form.

3:55

Analogue and Digital Times



When you see a time written in digital form, write the time in numbers and words.

When you see a time written in numbers and words, write the digital form.

3:55

5 to 4

Using A.M. and P.M.

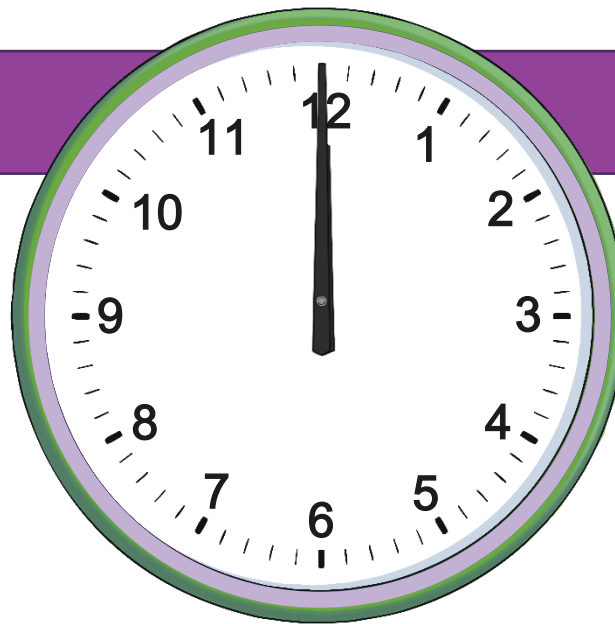


So, 7 o'clock in the morning would be written as 7 a.m.

7 o'clock in the evening would be 7 p.m.



Midday



Midnight



12:00 a.m.

Using A.M. and P.M.



There are 24 hours in a day. Because the numbers on an analogue clock only go up to 12, the hands have to go round twice to show a whole day. This means that every time is shown twice. For example, you might get up at 7 o'clock in the morning and watch TV at 7 o'clock in the evening.



Using A.M. and P.M.



Midday is at 12 o'clock in the middle of the day. When we use the 12-hour clock, we use a.m. and p.m. to show whether a time is before or after midday. We use a.m. for times before midday. We use p.m. for times after midday.



Using A.M. and P.M.



Midday is at 12 o'clock in the middle of the day. When we use the 12-hour clock, we use a.m. and p.m. to show whether a time is before or after midday. We use a.m. for times before midday. We use p.m. for times after midday.



Midnight



12:00 a.m.

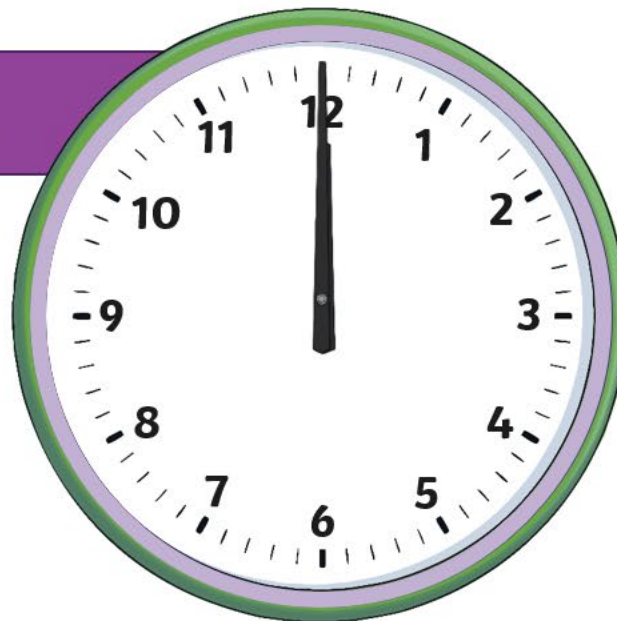
Using A.M. and P.M.



Midday is at 12 o'clock in the middle of the day. When we use the 12-hour clock, we use a.m. and p.m. to show whether a time is before or after midday. We use a.m. for times before midday. We use p.m. for times after midday.



Midday



12:00 p.m.

Using A.M. and P.M.



So, 7 o'clock in the morning would be written as 7 a.m.

7 o'clock in the evening would be 7 p.m.



Midnight

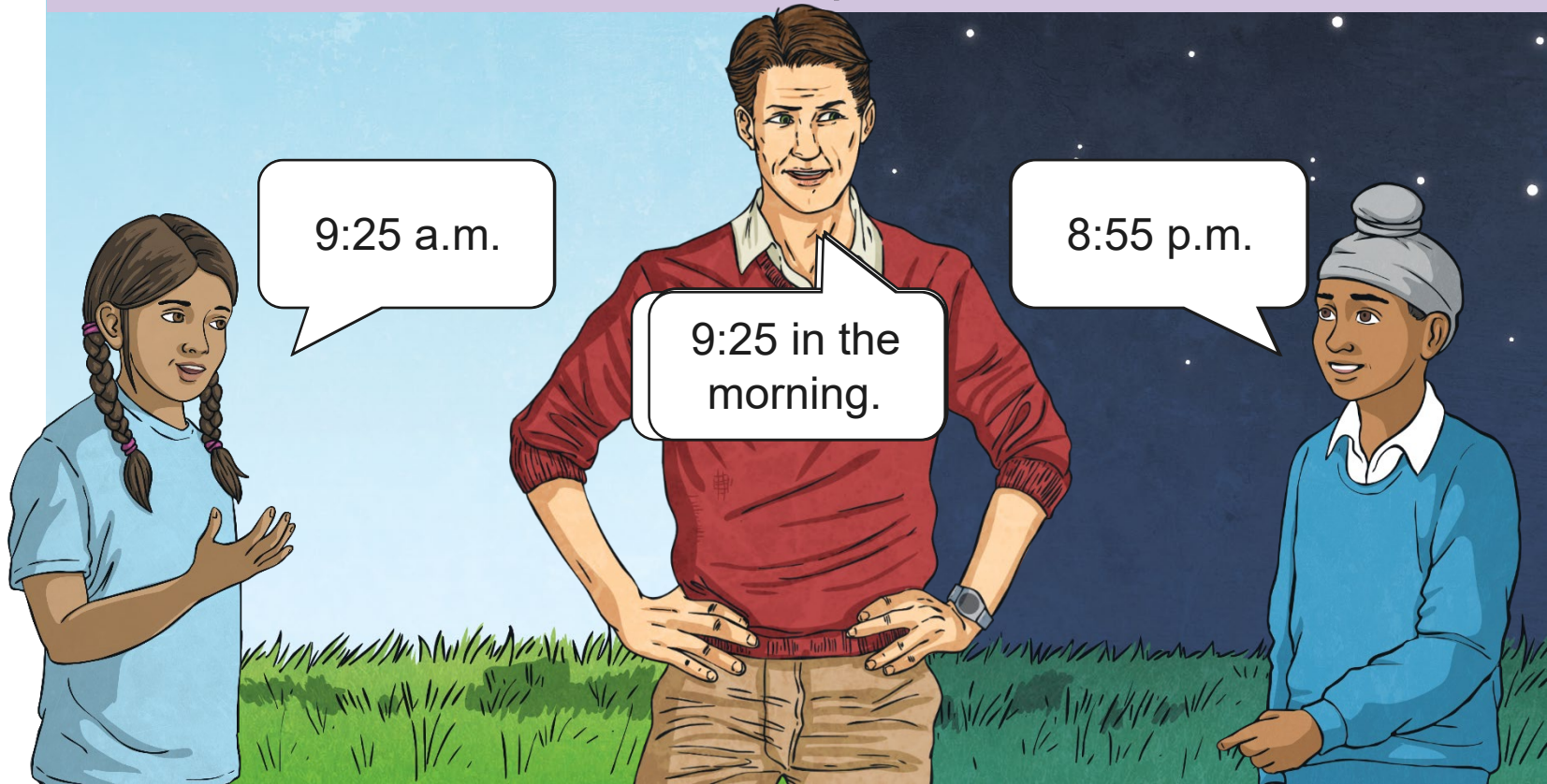


12:00 a.m.

Using A.M. and P.M.



Write the times shown using
a.m. or p.m.



Using A.M. and P.M.



Write the times shown using
a.m. or p.m.



Using A.M. and P.M.



Write the times shown using
a.m. or p.m.



Using A.M. and P.M.



Write the times shown using
a.m. or p.m.



Using A.M. and P.M.



Write the times shown using
a.m. or p.m.



Using A.M. and P.M.



Write the times shown using
a.m. or p.m.



8:55 in the
evening.

8:55 p.m.

Using A.M. and P.M.



Write the times shown using
a.m. or p.m.



Using A.M. and P.M.



Here are some things that happen across the course of a day. They are out of order. Put the activities in the right order and then write the times in a.m. and p.m.

Get up	7:00 a.m.
Go to school	8:40 a.m.
Eat lunch	12:15 p.m.
School ends	3:15 p.m.
Do homework	6:05 p.m.
Watch TV	7:35 p.m.
Have a bath	8:20 p.m.
Go to bed	8:55 p.m.

Using A.M. and P.M.



Here are some things that happen across the course of a day. They are out of order. Put the activities in the right order and then write the times in a.m. and p.m.

Get up	7:00 in the morning
Go to school	8:40 in the morning
Eat lunch	12:15 in the afternoon
School ends	3:15 in the afternoon
Do homework	6:05 in the evening
Watch TV	7:35 in the evening
Have a bath	8:20 in the evening
Go to bed	8:55 in the evening

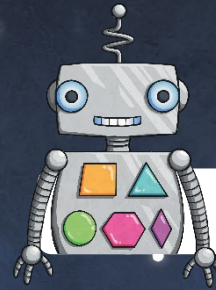
The 24-Hour Clock

The 24-hour clock is used in lots of different situations so that people don't have to write a.m. and p.m. Here are some of them:

airports

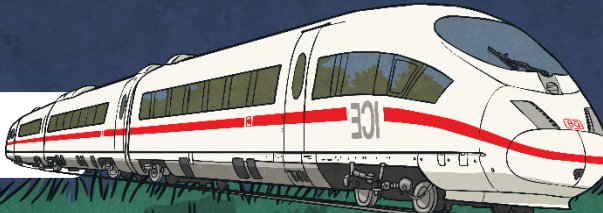


technology



the armed forces

train travel

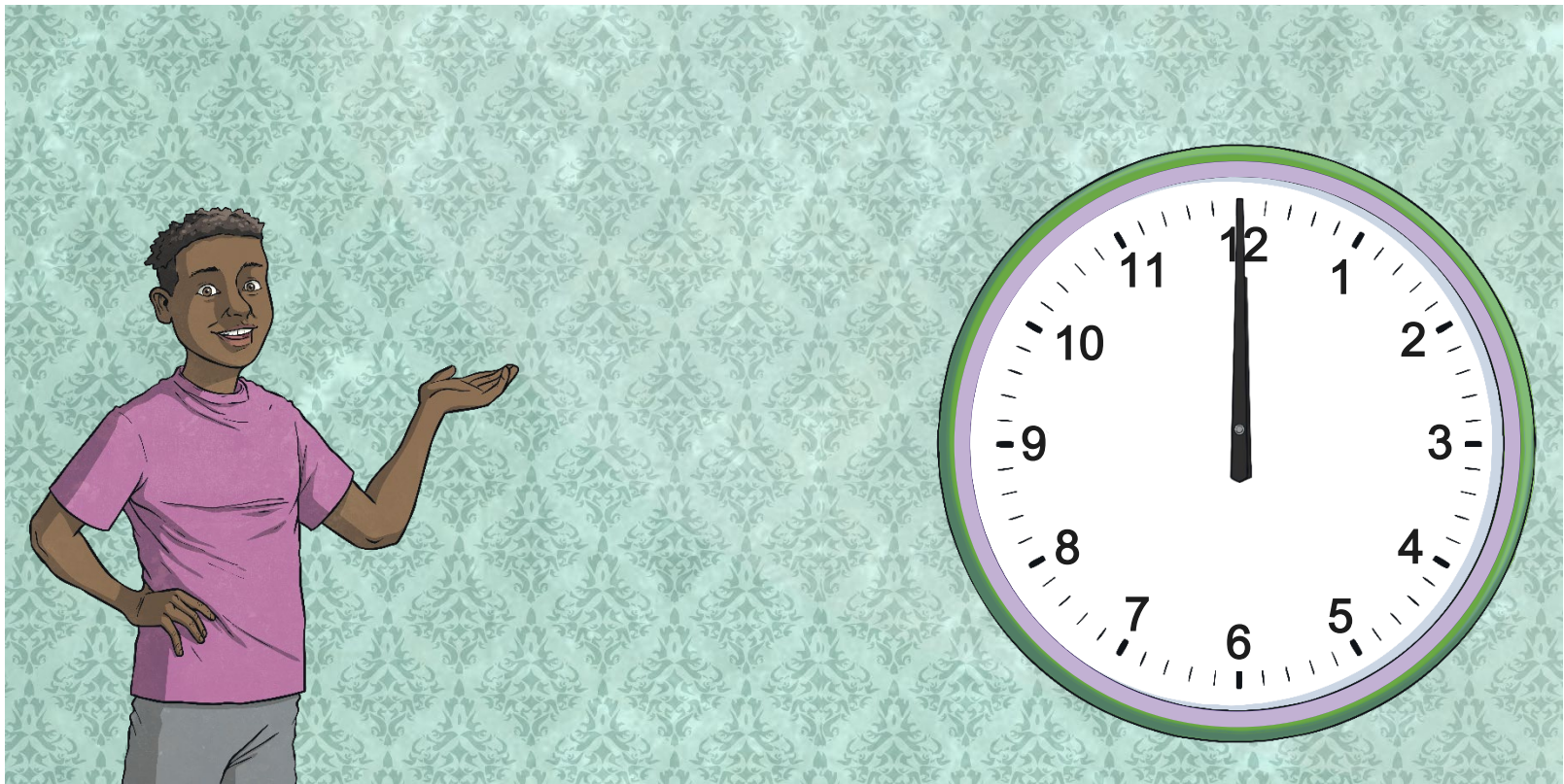


the police



The 24-Hour Clock

On a 12-hour clock, when the hour hand has gone all the way round the clock once, we start counting again from 1. We use a.m. and p.m. to tell the difference between times before 12 p.m. and after 12 p.m.



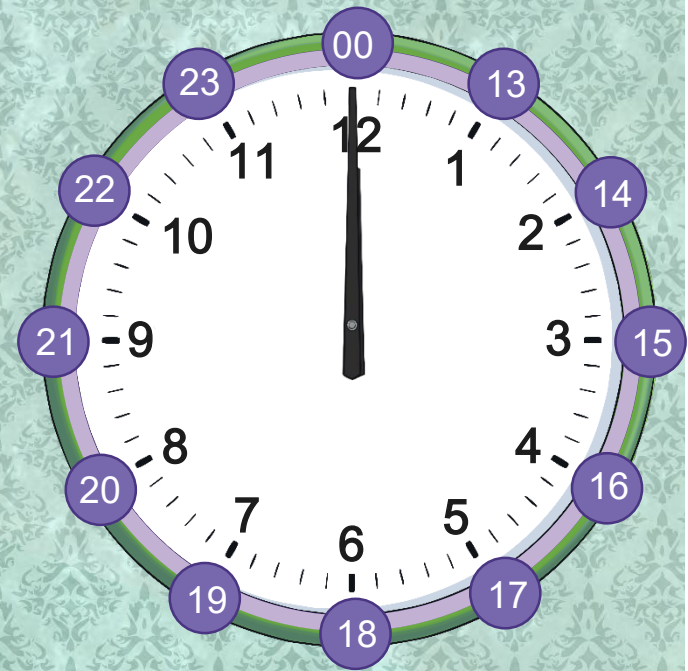
The 24-Hour Clock

On a 24-hour clock, the time is shown as how many hours and minutes have passed since midnight. When the hour hand has gone all the way round the clock once, we keep counting all the way up to 24. We do not need to use a.m. or p.m.



00:00

12:00 a.m.

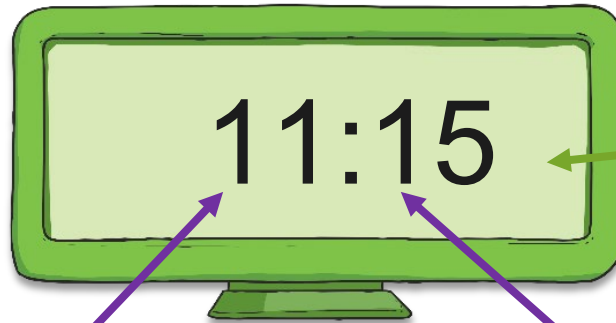


Changing 12-Hour Times to 24-Hour Times



To turn 12-hour **a.m.** times into 24-hour times:

11:15 a.m.



We do not need to write a.m.

We write the hour before the colon. If the hour is a smaller number than 10, we write a 0 to fill the gap.

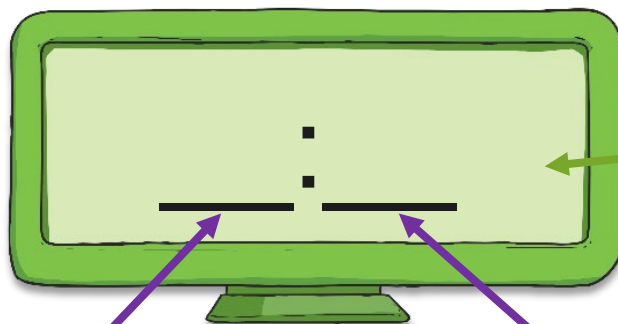
We write the minutes after the colon.

Changing 12-Hour Times to 24-Hour Times



To turn 12-hour **a.m.** times into 24-hour times:

3:00 a.m.



We do not need to write a.m.

We write the hour before the colon. If the hour is a smaller number than 10, we write a 0 to fill the gap.

We write the minutes after the colon.

Changing 12-Hour Times to 24-Hour Times



To turn 12-hour **a.m.** times into 24-hour times:

3:00 a.m.



We do not need to write a.m.

We write the hour before the colon. If the hour is a smaller number than 10, we write a 0 to fill the gap.

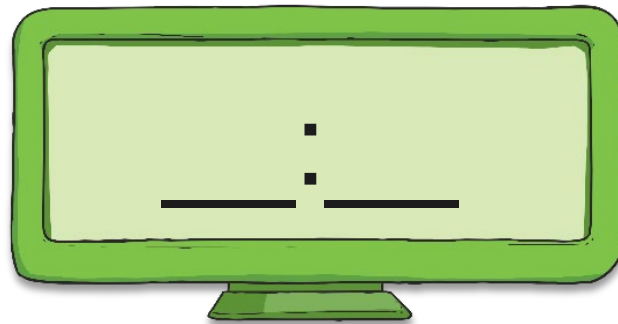
We write the minutes after the colon.

Changing 12-Hour Times to 24-Hour Times



Can you change this 12-hour a.m. time to a 24-hour time?

7:40 a.m.



Changing 12-Hour Times to 24-Hour Times



Can you change this 12-hour a.m. time to a 24-hour time?

7:40 a.m.

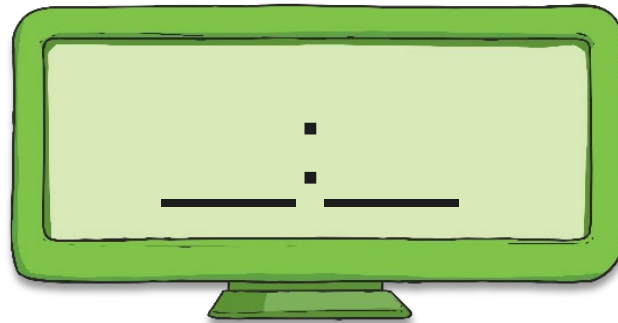


Changing 12-Hour Times to 24-Hour Times



Can you change this 12-hour a.m. time to a 24-hour time?

1:30 a.m.

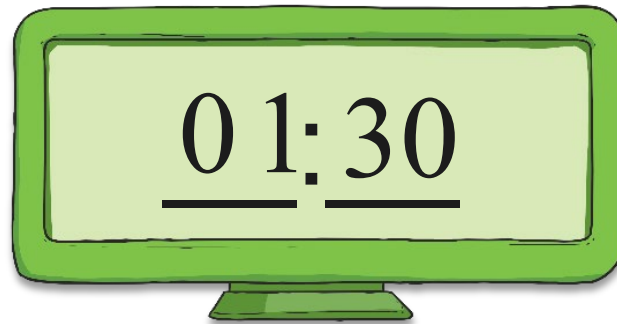


Changing 12-Hour Times to 24-Hour Times



Can you change this 12-hour a.m. time to a 24-hour time?

1:30 a.m.



Changing 12-Hour Times to 24-Hour Times



To turn 12-hour **p.m.** times into 24-hour times:

4:00 p.m.



We do not need to write p.m.

Add 12 to the p.m. hour to find the 24-hour time. We write the hour before the colon.

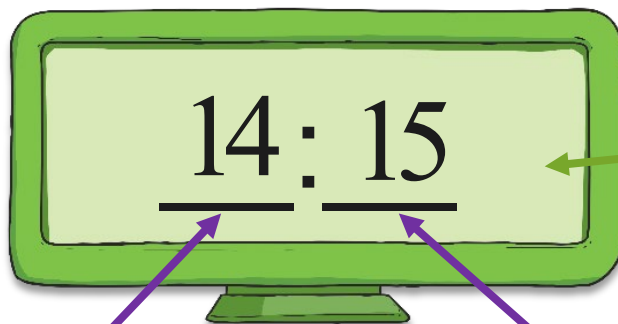
We write the minutes after the colon.

Changing 12-Hour Times to 24-Hour Times



To turn 12-hour **p.m.** times into 24-hour times:

2:15 p.m.



We do not need
to write p.m.

Add 12 to the p.m. hour to find the 24-hour time. We write the hour before the colon.

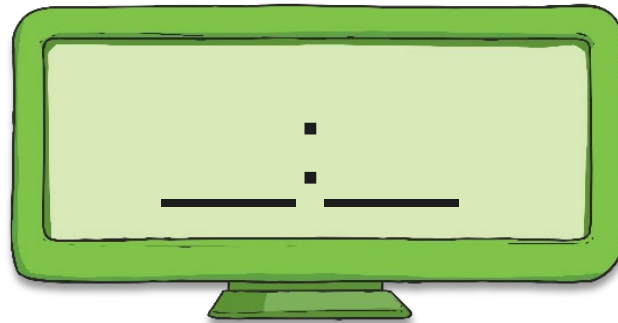
We write the minutes
after the colon.

Changing 12-Hour Times to 24-Hour Times



Can you change this 12-hour p.m. time to a 24-hour time?

9 p.m.

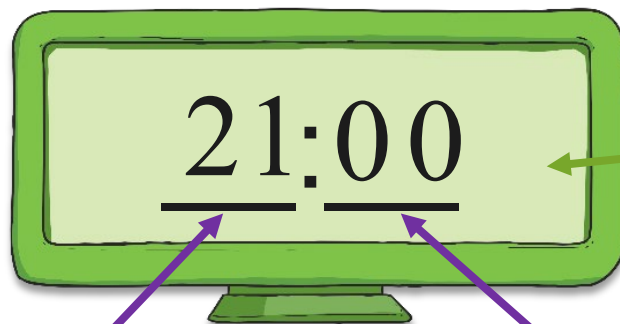


Changing 12-Hour Times to 24-Hour Times



Can you change this 12-hour p.m. time to a 24-hour time?

9 p.m.



We do not need to write p.m.

Add 12 to the p.m. hour to find the 24-hour time. We write the hour before the colon.

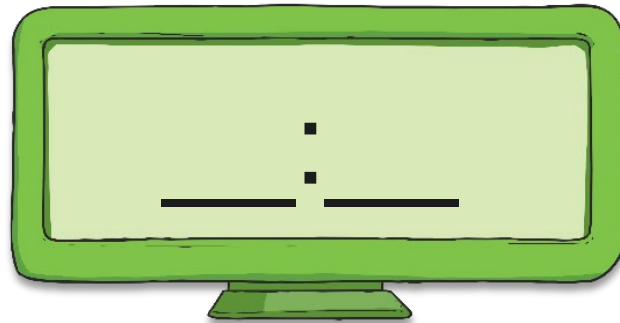
We write the minutes after the colon.

Changing 12-Hour Times to 24-Hour Times



Can you change this 12-hour p.m. time to a 24-hour time?

11:20 p.m.

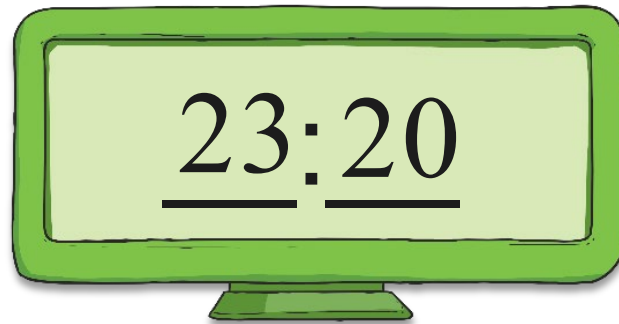


Changing 12-Hour Times to 24-Hour Times



Can you change this 12-hour p.m. time to a 24-hour time?

11:20 p.m.

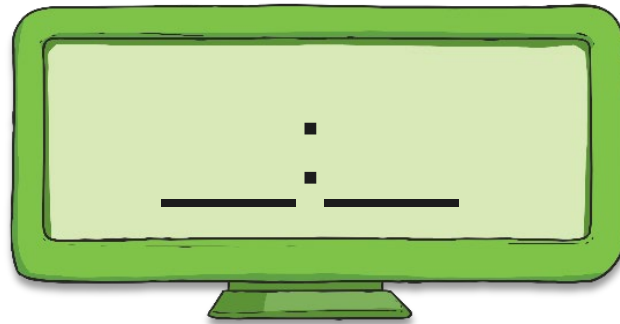


Changing 12-Hour Times to 24-Hour Times



Can you change this 12-hour p.m. time to a 24-hour time?

6:45 p.m.

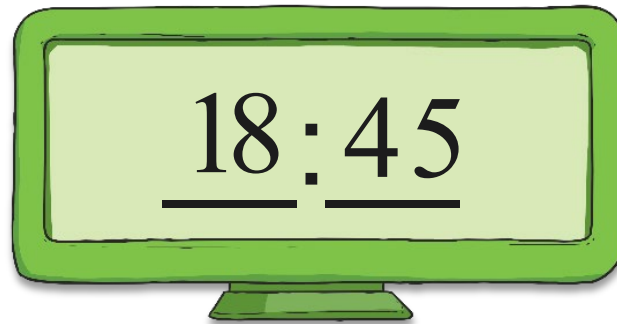


Changing 12-Hour Times to 24-Hour Times



Can you change this 12-hour p.m. time to a 24-hour time?

6:45 p.m.

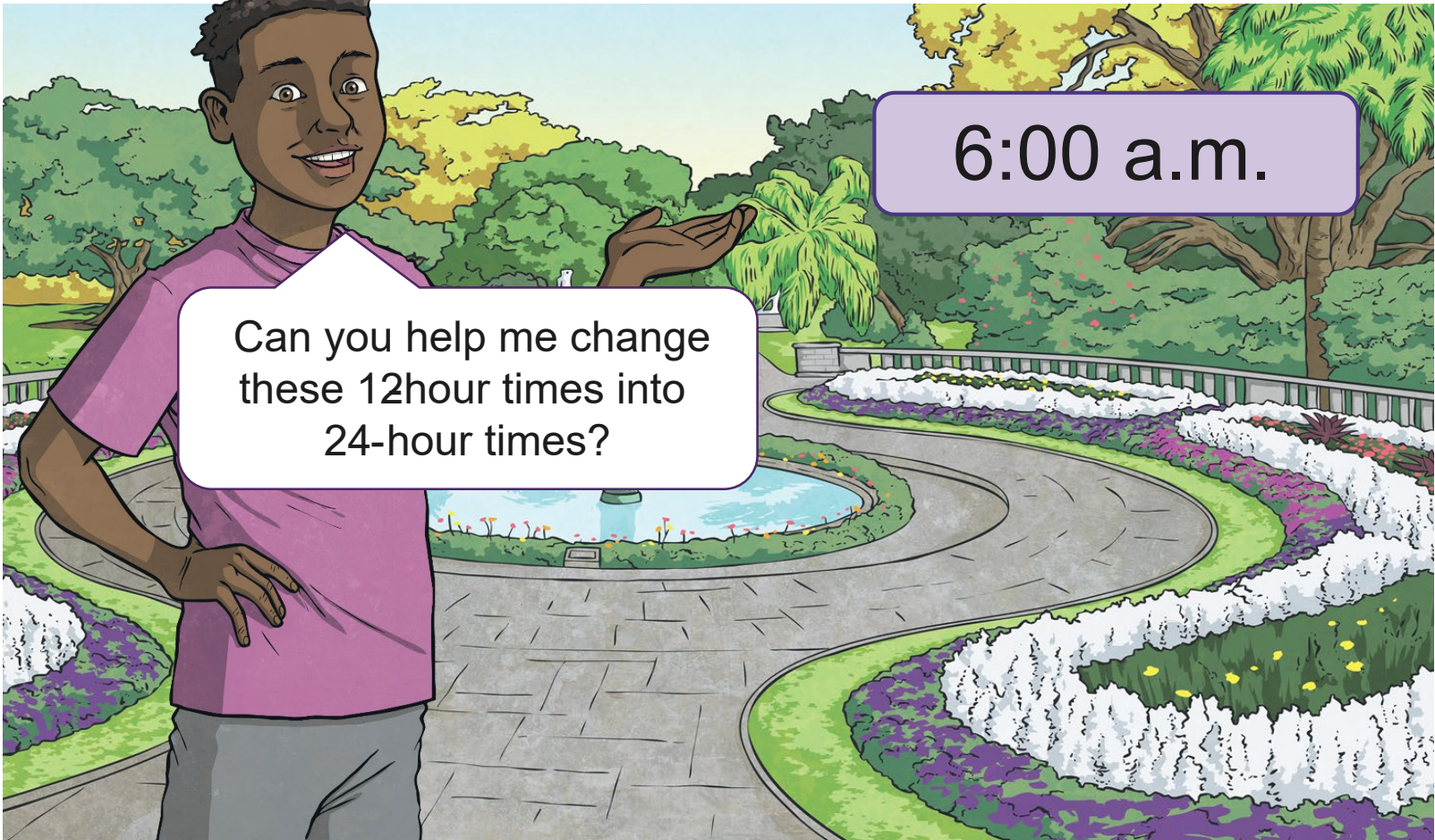


Mix It Up!

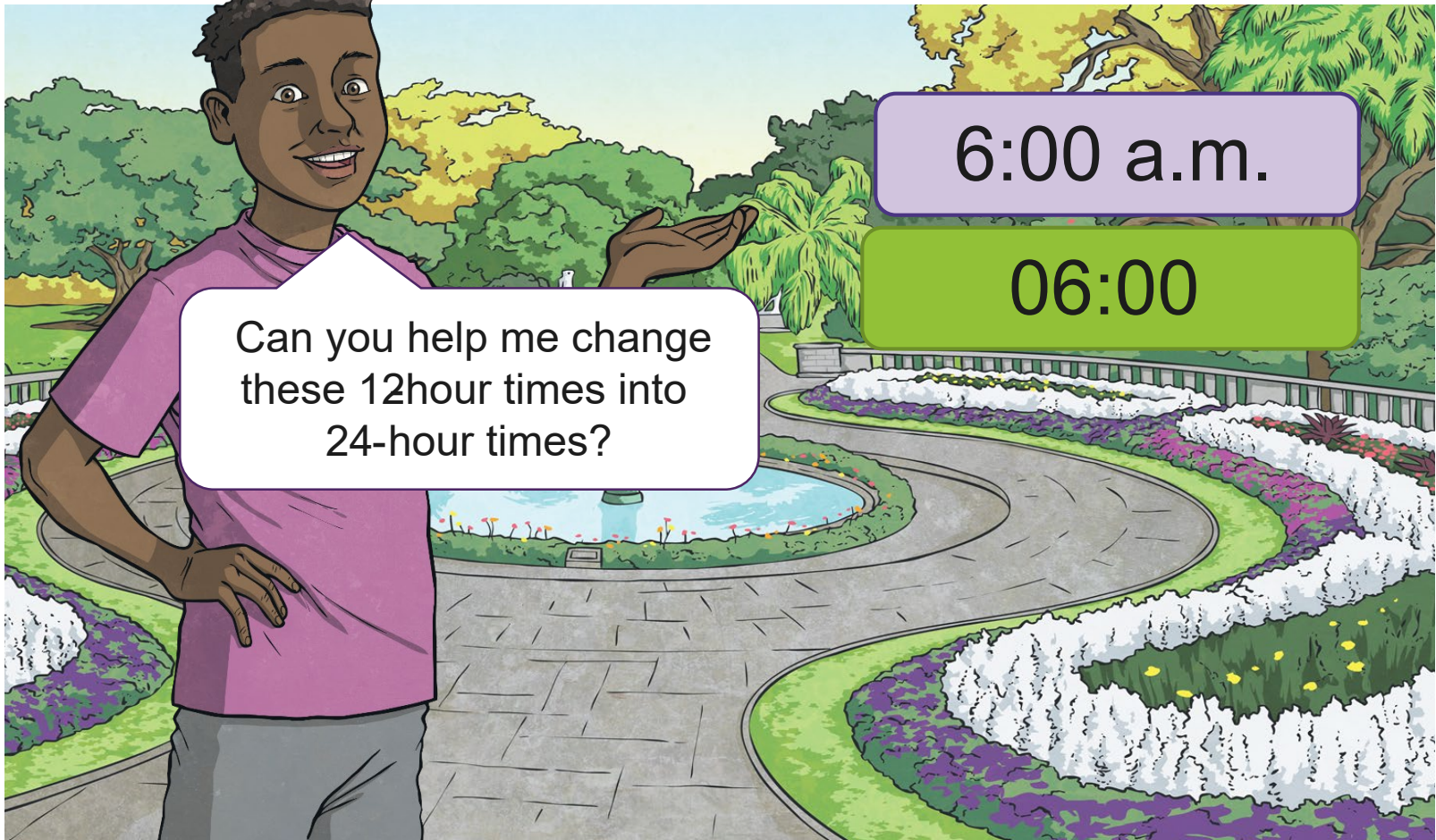


6:00 a.m.

Can you help me change these 12-hour times into 24-hour times?



Mix It Up!

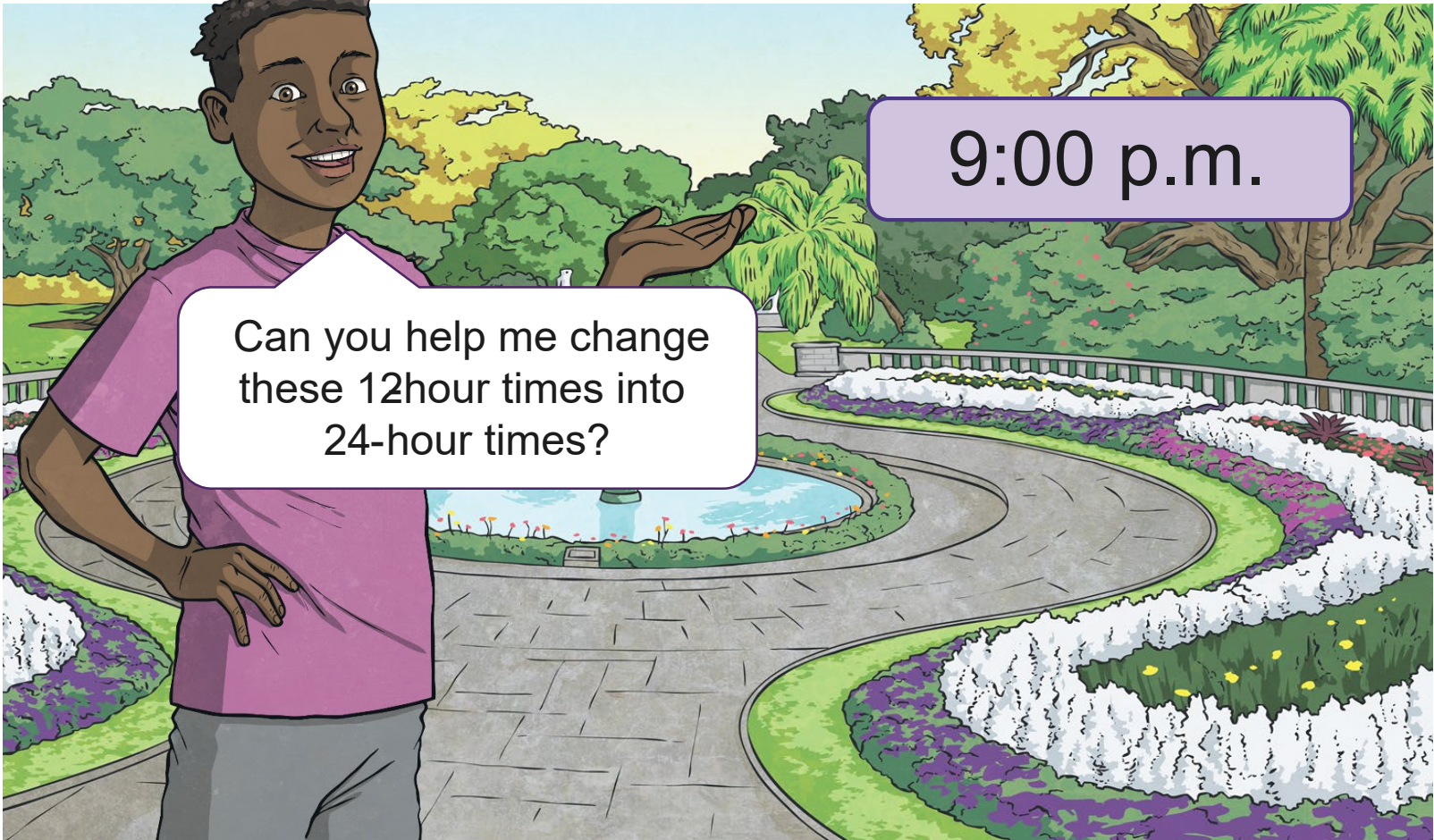


Mix It Up!

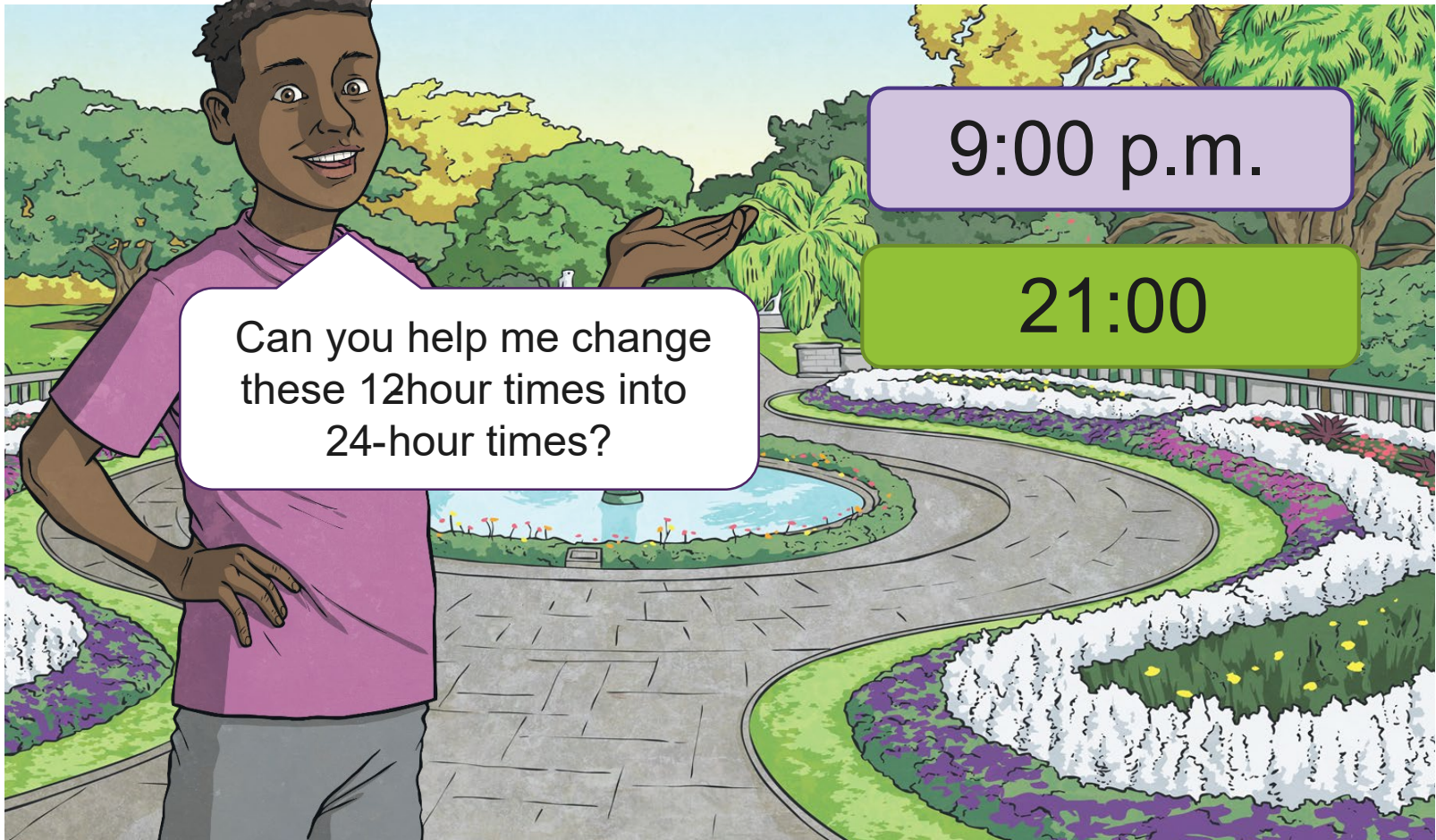


9:00 p.m.

Can you help me change these 12-hour times into 24-hour times?



Mix It Up!

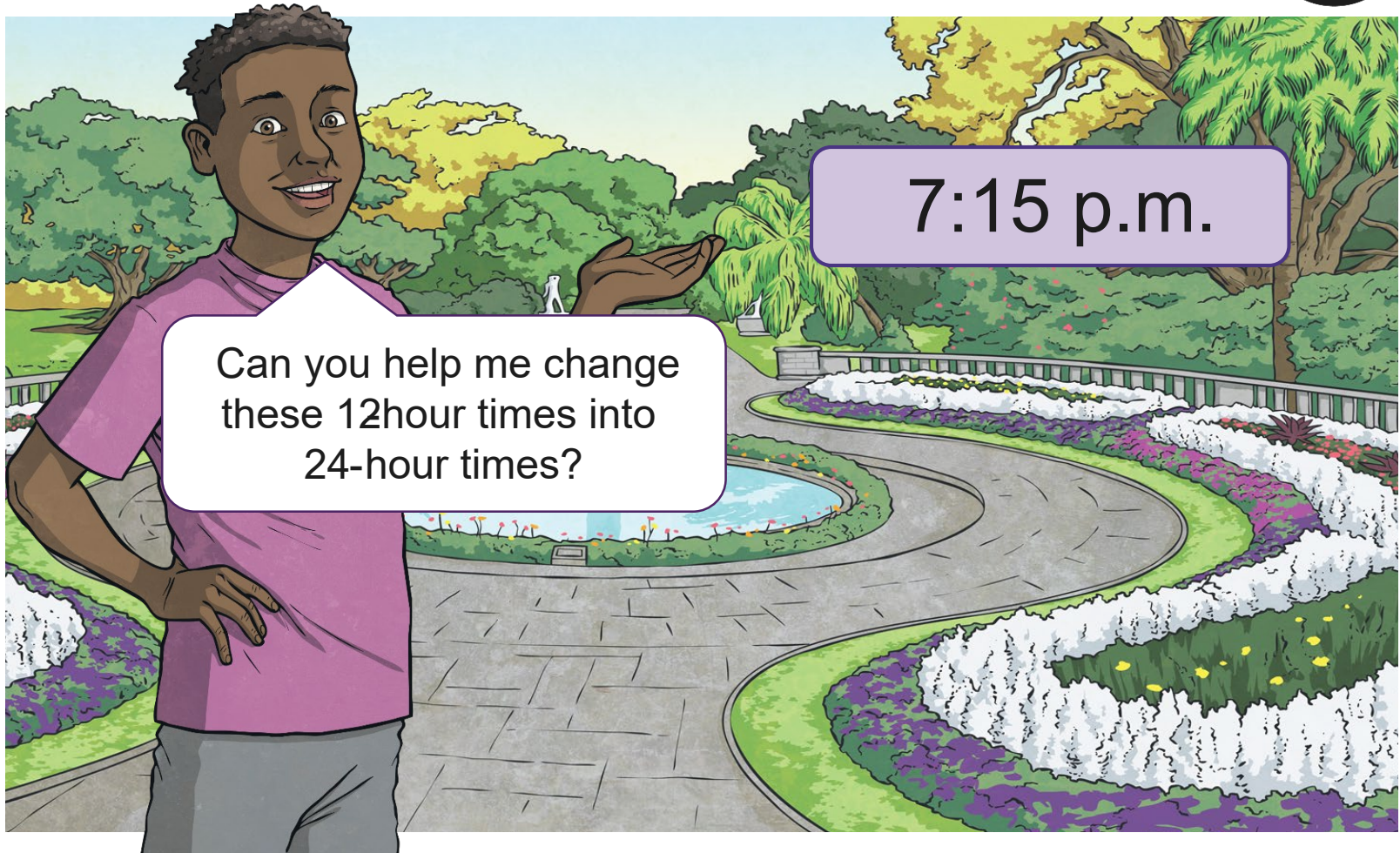


9:00 p.m.

21:00

Can you help me change these 12hour times into 24-hour times?

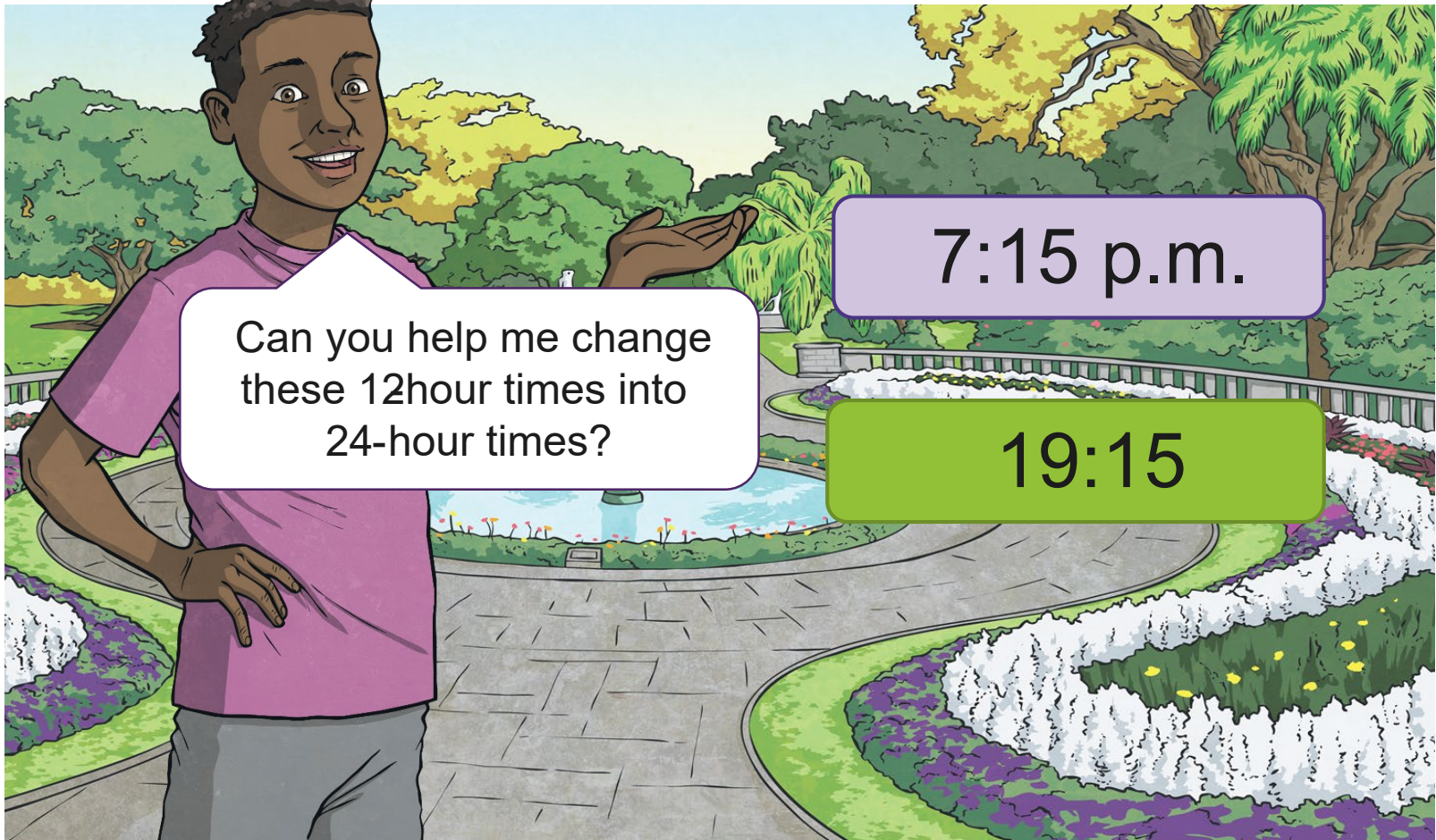
Mix It Up!



Can you help me change these 12-hour times into 24-hour times?

7:15 p.m.

Mix It Up!



Can you help me change these 12hour times into 24-hour times?

7:15 p.m.

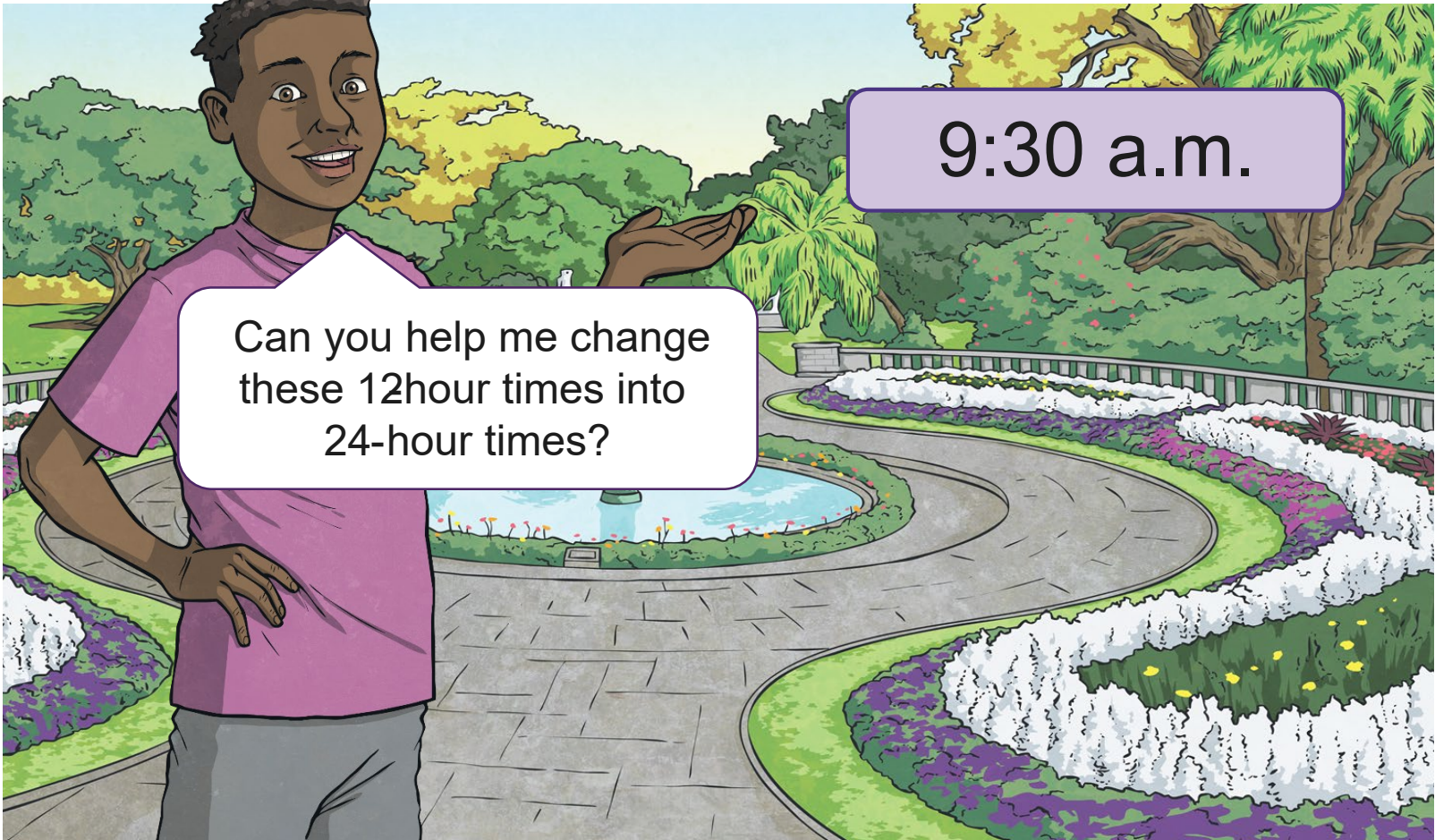
19:15

Mix It Up!



9:30 a.m.

Can you help me change these 12-hour times into 24-hour times?



Mix It Up!



Can you help me change these 12hour times into 24-hour times?

9:30 a.m.

09:30

Mix It Up!



Can you help me change
these 12hour times into
24-hour times?

6:20 p.m.

Mix It Up!



Can you help me change these 12-hour times into 24-hour times?

6:20 p.m.

18:20

Match the Times



Match the 12-hour times to their 24 -hour equivalents.
Click the 24-hour time to find out if you are right!

4:45 p.m.

04:45

2:45 a.m.

14:45

6:45 a.m.

18:45

4:45 a.m.

06:45

6:45 p.m.

16:45

2:45 p.m.

02:45

Match the Times



Match the 12-hour times to their 24 -hour equivalents.
Click the 24-hour time to find out if you are right!

4:45 p.m.

2:45 a.m.

6:45 a.m.

4:45 a.m.

6:45 p.m.

2:45 p.m.

04:45

14:45

18:45

06:45

16:45

02:45

