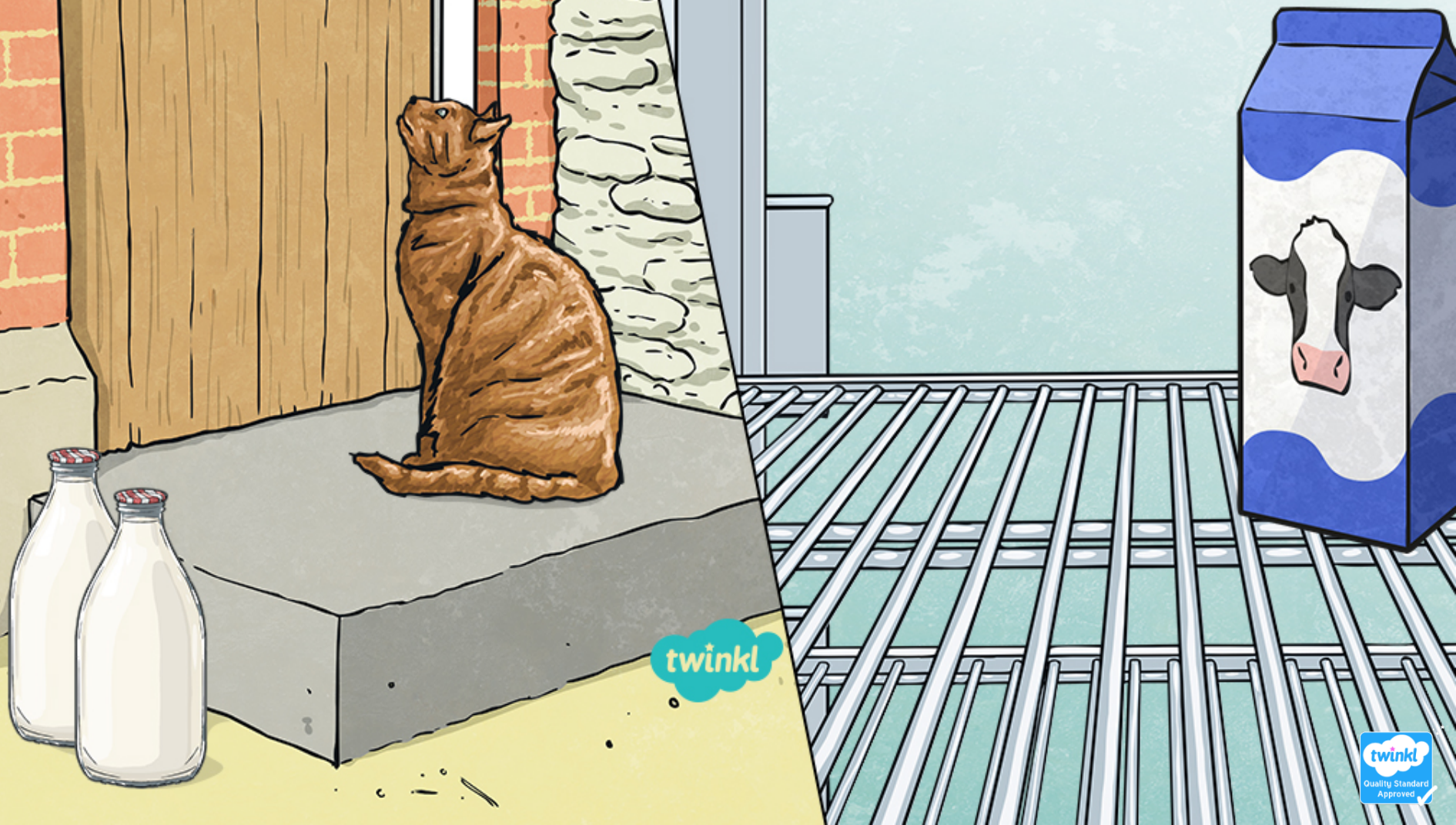


Pints and Litres



twinkl

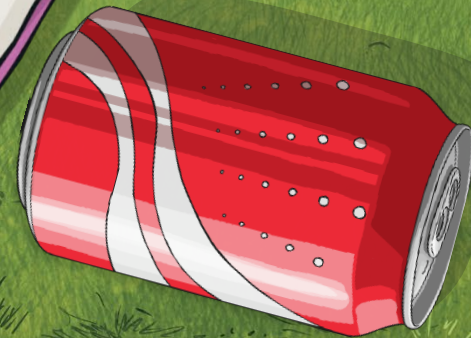
Imperial Units of Volume and Capacity



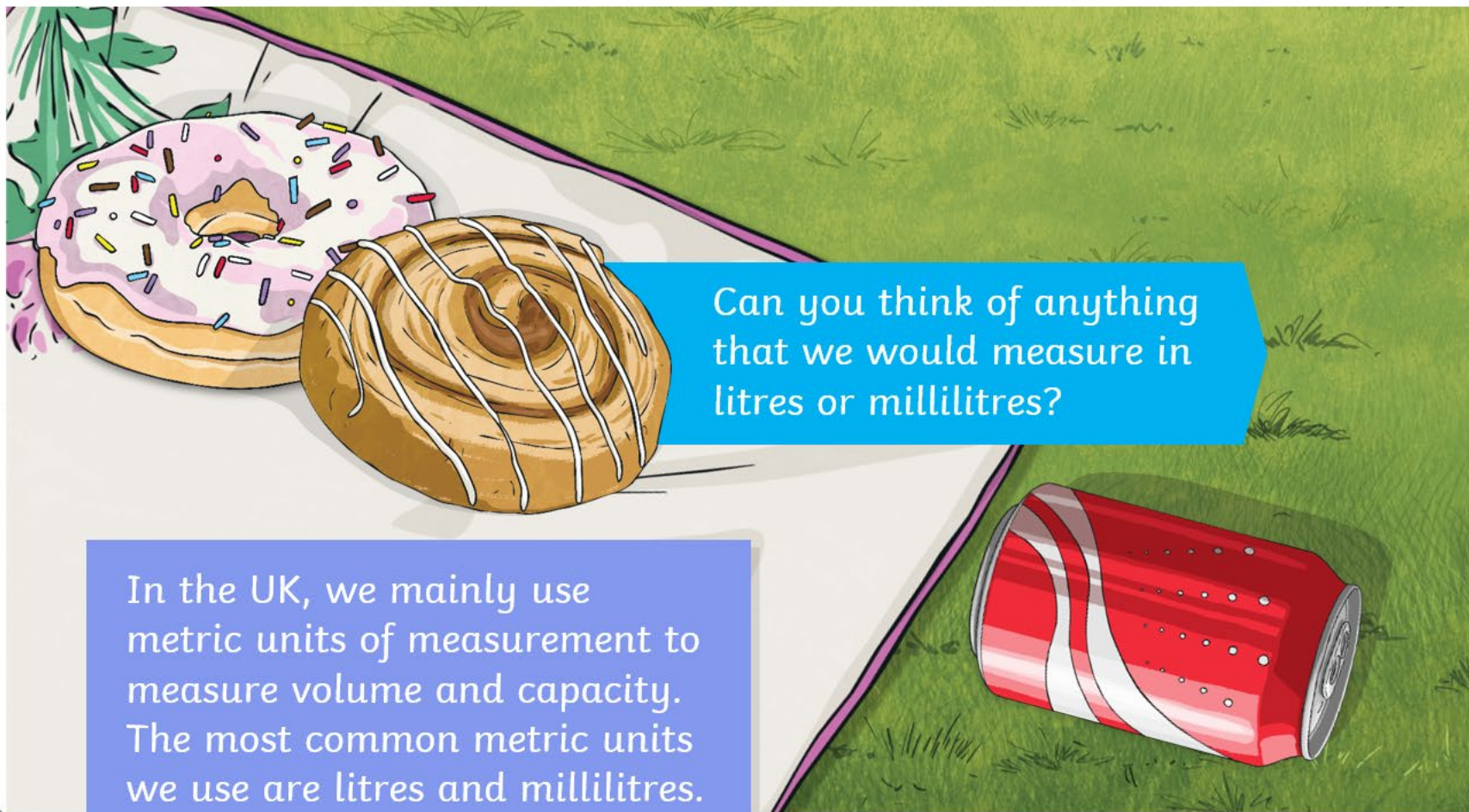
However, we do use some imperial units of measurement as well. Pints are the most common imperial units we use to measure volume and capacity. Although there are eight pints in a gallon, which is another imperial unit of volume and capacity, we do not normally use gallons as a measurement in the UK.

Can you think of anything that we would measure in pints?

...only use measurement to and capacity. The most common metric units we use are litres and millilitres.



Imperial Units of Volume and Capacity



Can you think of anything that we would measure in litres or millilitres?

In the UK, we mainly use metric units of measurement to measure volume and capacity. The most common metric units we use are litres and millilitres.

Imperial Units of Volume and Capacity



However, we do use some imperial units of measurement as well. Pints are the most common imperial units we use to measure volume and capacity. Although there are eight pints in a gallon, which is another imperial unit of volume and capacity, we do not normally use gallons as a measurement in the UK.

Can you think of anything that we would measure in pints?

Pints to Litres



The customers of both companies need to convert between the two to work out which company they should order from.

Two different milk delivery companies meet...

How did you calculate 5×0.6 ?

$$1 \text{ litre} \approx 0.61$$

and in pints

$$1 \text{ pint} \approx 31$$

One way of calculating this would be to use the number facts that you already know.

$$5 \times 6 = 30$$

$$5 \times 0.6 = 3$$

Pints to Litres



Two different milk delivery companies measure their milk in different ways. Milko uses glass bottles that are measured in pints while Dairy Moo uses cartons that are measured in litres.



Pints to Litres



The customers of both companies need to convert between the two to work out which company they should order from.

1 pint \approx 0.6l

How many litres are in 5 pints?

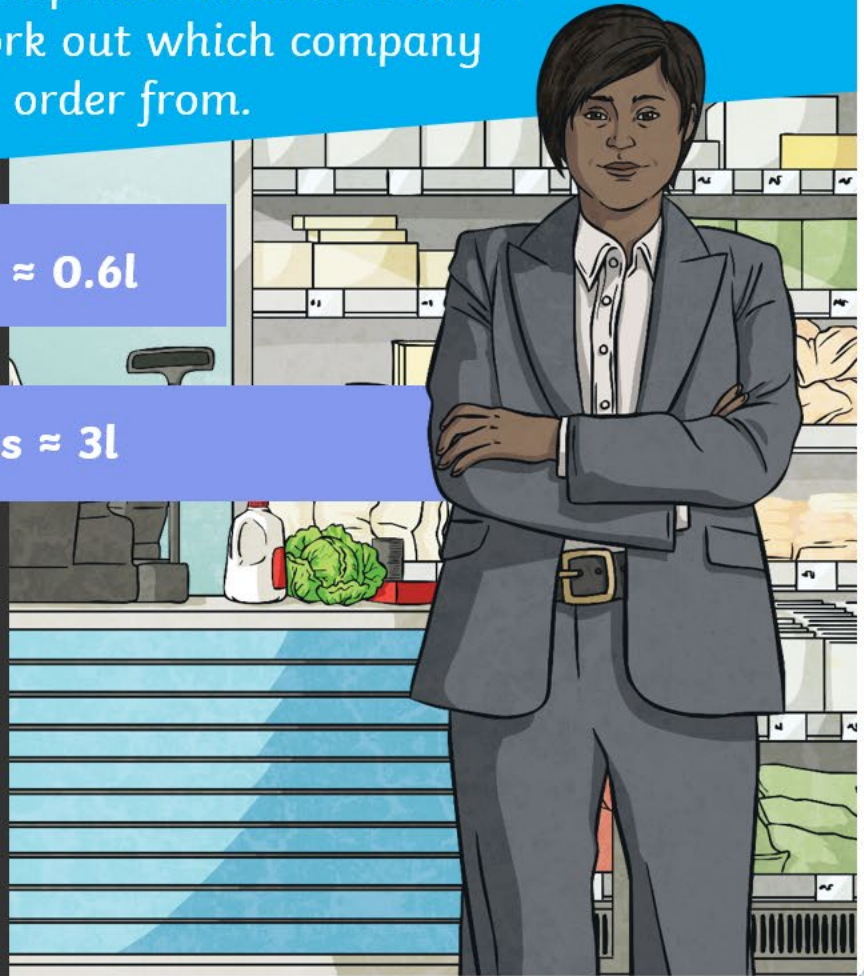
Pints to Litres



The customers of both companies need to convert between the two to work out which company they should order from.

1 pint \approx 0.6l

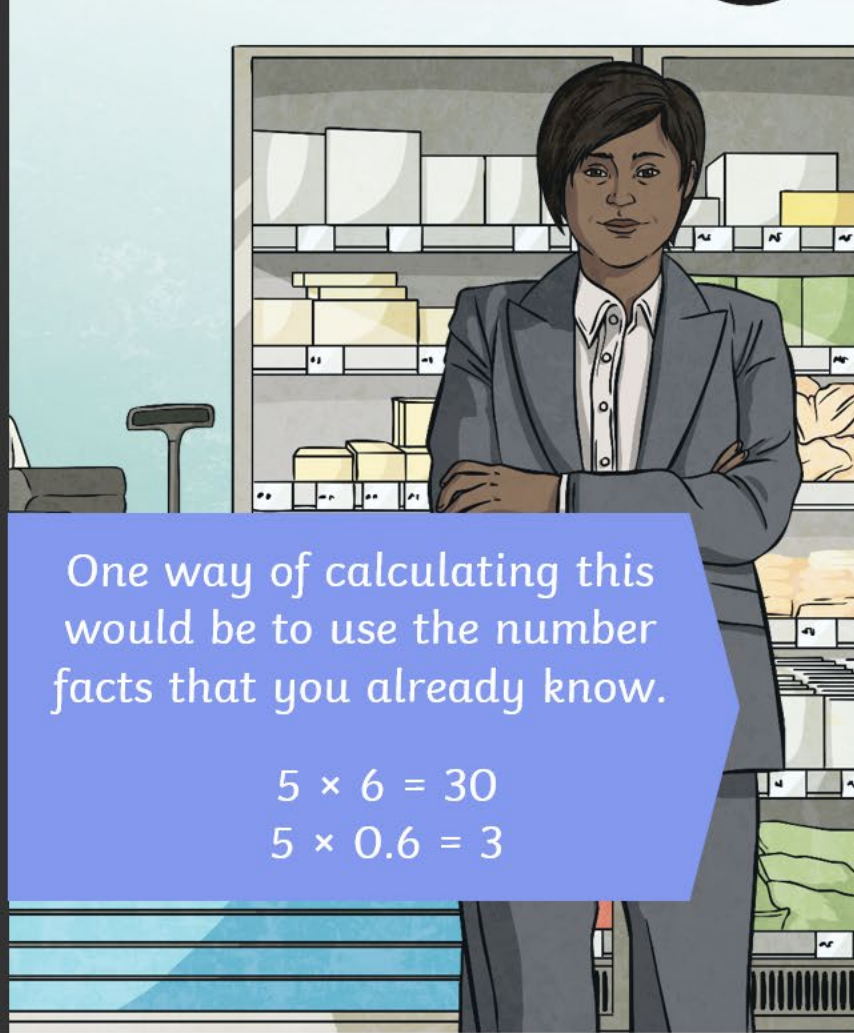
5 pints \approx 3l



Pints to Litres



How did you
calculate 5×0.6 ?



One way of calculating this
would be to use the number
facts that you already know.

$$5 \times 6 = 30$$

$$5 \times 0.6 = 3$$

Pints to Litres



1 pint \approx 0.6l

What strategies will you use to convert from pints to litres?

number
facts

another
method?

add

$\div 2$

double

halve

1 pint	2 pints	3 pints	4 pints	5 pints	6 pints	7 pints
0.6l						



Pints to Litres



1 pint \approx 0.6l

What strategies will you use to convert from pints to litres?

number facts

another method?

add

$\div 2$

double

halve

1 pint	2 pints	3 pints	4 pints	5 pints	6 pints	7 pints
0.6l	1.2l	1.8l	2.4l	3l	3.6l	4.2l

$$5 \times 6 = 30$$
$$5 \times 0.6 = 3$$



Litres to Pints



$1\text{l} \approx 1.8 \text{ pints}$

What strategies will you use to convert from litres to pints?

add

halve

number facts

$\div 2$

double

another method?

1l	2l	3l	4l	5l	10l
1.8 pints					

Litres to Pints



$1\text{ l} \approx 1.8 \text{ pints}$

What strategies will you use to convert from litres to pints?

add

halve

number facts

$\div 2$

double

another method?

1l	2l	3l	4l	5l	10l
1.8 pints	3.6 pints	5.4 pints	7.2 pints	9 pints	18 pints

Milk Delivery Problems



Maria and her brother, Karolis, bought 3 pints of milk that they already had 3 litres of. How much milk did they have in total? Give your answer in pints.

They used 4 litres of milk to make the milkshakes. How much milk did they have left over? Give your answer in pints.

3 litres = 5.4 pints
 $5.4 \text{ pints} + 3 \text{ pints} = 8.4 \text{ pints}$
They had 8.4 pints of milk in total.

8.4 pints
They had



1 pint \approx 0.61 litres

1 litre \approx 1.8 pints

Milk Delivery Problems



Maria and her brother, Karolis, bought 3 pints of milk to make milkshakes. They already had 3 litres of milk at home. How much milk did they have altogether? Give your answer in pints.



1 pint \approx 0.6l

1l \approx 1.8 pints

Milk Delivery Problems



Maria and her brother, Karolis, bought 3 pints of milk to make milkshakes. They already had 3 litres of milk at home. How much milk did they have altogether? Give your answer in pints.

3 litres = 5.4 pints
 $5.4 \text{ pints} + 3 \text{ pints} = 8.4 \text{ pints}$
They had 8.4 pints of milk in total.



1 pint \approx 0.6l

1l \approx 1.8 pints

Milk Delivery Problems



They used 4 litres of milk to make the milkshakes. How much milk did they have left over? Give your answer in pints.

1 pint \approx 0.6l

1l \approx 1.8 pints

Milk Delivery Problems



Maria says that more than 8 litres was delivered overall. Karolis says that it was less than 8 litres. Who is correct? Explain how you know.

Milko delivered the following amounts of milk to Maria's family:

Monday	Tuesday	Wednesday	Thursday	Friday
2 pints	1 pint	3 pints	2 pints	4 pints

How did you calculate the answer?

Milko delivered 12 pints altogether. We need to convert this amount to litres. One way of doing this would be to split it into 10 pints and 2 pints.

$$\begin{aligned} 10 \text{ pints} &= 6\text{l} \\ 2 \text{ pints} &= 1.2\text{l} \\ 6\text{l} + 1.2\text{l} &= 7.2\text{l} \end{aligned}$$

This is less than 8 litres – Karolis is correct.

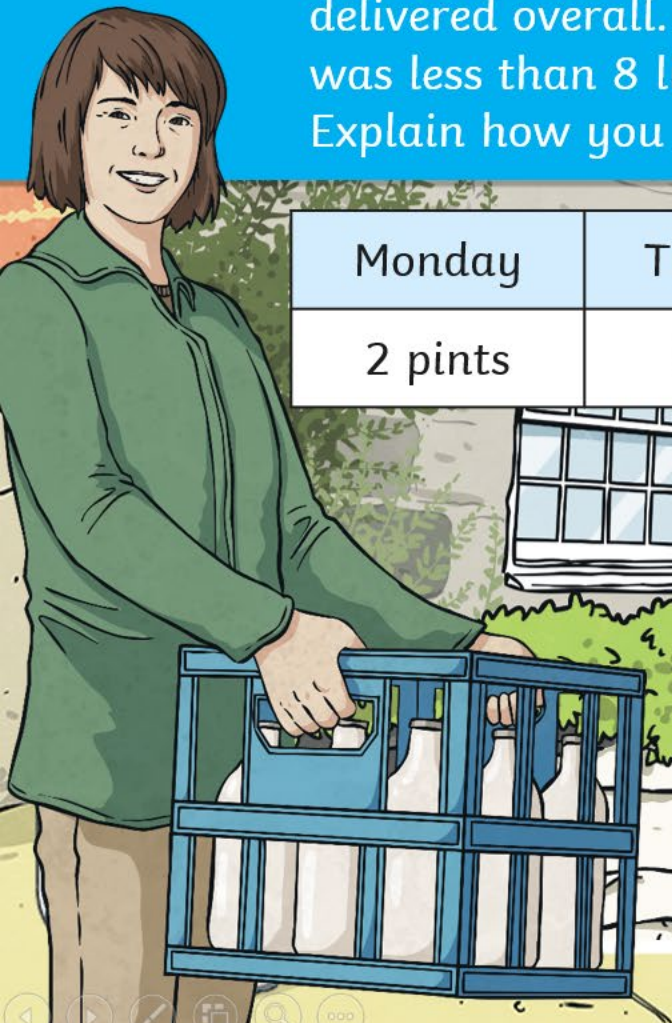
Milk Delivery Problems



Maria says that more than 8 litres was delivered overall. Karolis says that it was less than 8 litres. Who is correct? Explain how you know.

Milko delivered the following amounts of milk to Maria's family:

Monday	Tuesday	Wednesday	Thursday	Friday
2 pints	1 pint	3 pints	2 pints	4 pints



Milk Delivery Problems



Maria says that more than 8 litres was delivered overall. Karolis says that it was less than 8 litres. Who is correct? Explain how you know.

Milko delivered the following amounts of milk to Maria's family:

Monday	Tuesday	Wednesday	Thursday	Friday
2 pints	1 pint	3 pints	2 pints	4 pints

Milko delivered 12 pints altogether. We need to convert this amount to litres. One way of doing this would be to split it into 10 pints and 2 pints.

$$\begin{aligned} 10 \text{ pints} &= 6\text{l} \\ 2 \text{ pints} &= 1.2\text{l} \\ 6\text{l} + 1.2\text{l} &= 7.2\text{l} \end{aligned}$$

This is less than 8 litres
– Karolis is correct.

Fill the Bucket



This bucket holds 3.5 litres.
Work with a partner to work
out how you could use the
bottles to fill the bucket with
as much water as possible.

You will need to fill
the bottles more than
once. Although you
don't have to use all
the bottles, you must
use more than one
type of bottle.

2 pints

1 pint

500ml

250ml

$\frac{1}{2}$ pints

Fill the Bucket



There are multiple possible solutions to this problem. Here is one example:

1 pint \approx 0.6l

1.2l

+

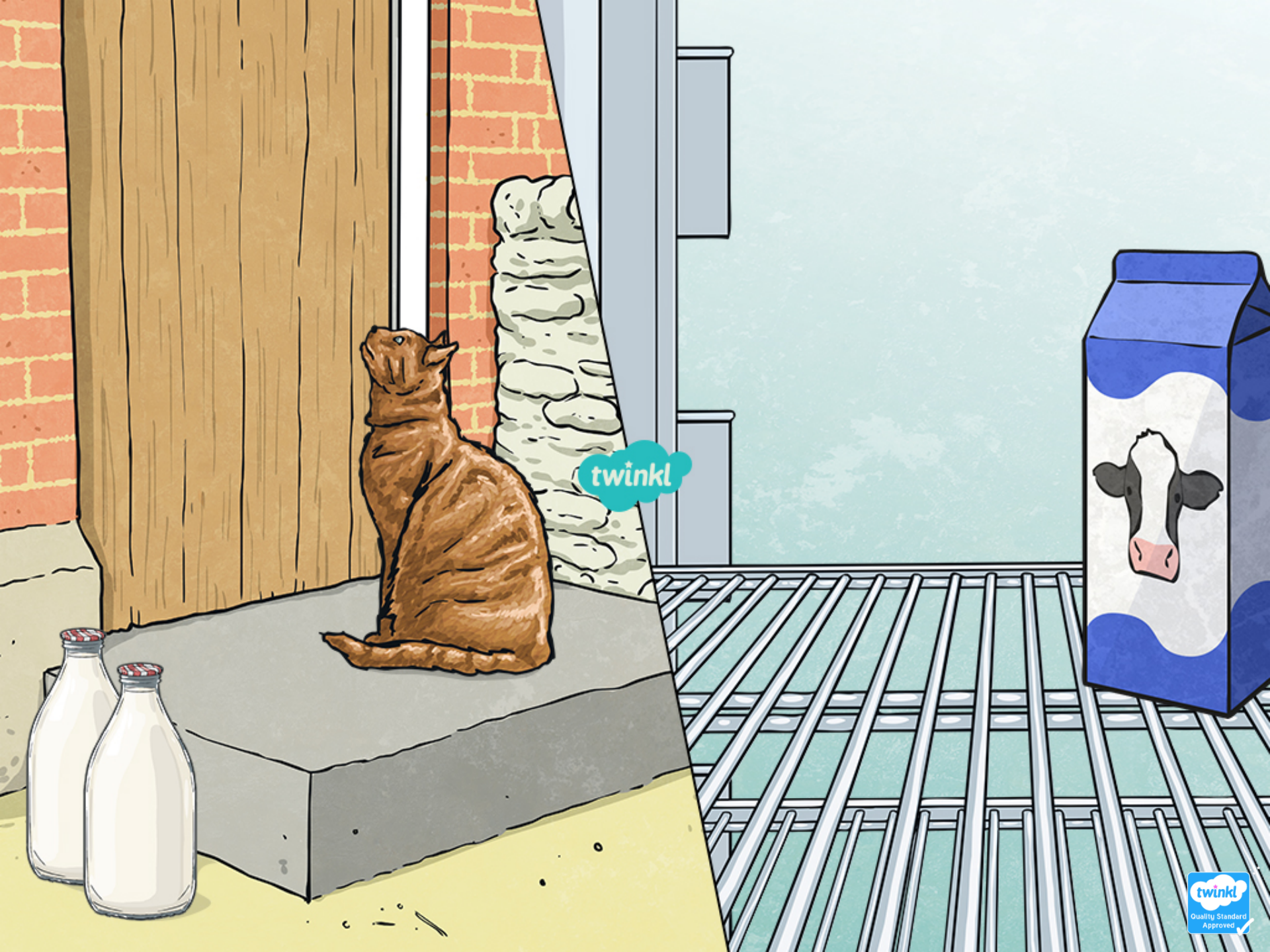
0.6l

+

0.5l

= 3.5l

1.2l



twinkl